



MANDATORY
SERVICE BULLETIN

No. 0008

DATE: 07TH May 2018

**58 KEMP STREET
KILBIRNIE, WELLINGTON 6022, NZ**

SUBJECT: Sopwith Snipe Lower Fuel Tank Pump Drive Shaft.

MODELS AFFECTED: The Vintage Aviator Limited Sopwith Snipe
Serial Numbers Affected: All.

COMPLIANCE: This Service Bulletin becomes effective upon receipt at which time compliance should be met before next scheduled flight.

BACKGROUND: TVAL have noticed that the emergency fuel pump drive is hard to operate at times, which may result in the flexible drive cable breaking. This has been traced to the lower fuel tank top skin flexing and resultant misalignment of the drive shaft, causing it to jam in the top flexible drive fitting.

PURPOSE: This bulletin introduces a modification to the existing fuel pump drive shaft to include a universal joint at the upper end.

INSTRUCTIONS:

Refer to attached drawings W1M139015 Rev 1 and W1M139015-5

1. Remove the belly panel and drain all fuel from the lower main tank.
2. Remove flexible drive cable from top of tank fitting
3. Remove aircraft cross bracing wire from pump side and remove fuel pump with drive shaft
4. Make all parts and modify drive shaft in accordance with attached drawings, ensuring that the shaft is the same length as when removed.
5. Lubricate pump and shaft, and then refit to fuel tank making sure that drive shaft is engaged plus fitted correctly in the flexible drive fitting.
6. Refuel aircraft lower tank and test pump for correct operation. Check for any fuel leaks and rectify as necessary.
7. Reinstall cross bracing wire and lock wire.
8. Refit belly panel
9. Make a logbook entry indicating compliance with this Service Bulletin

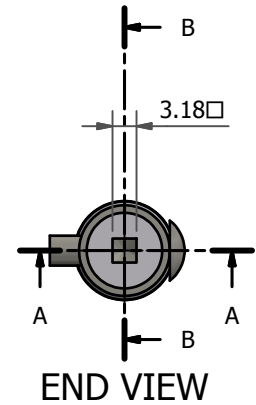
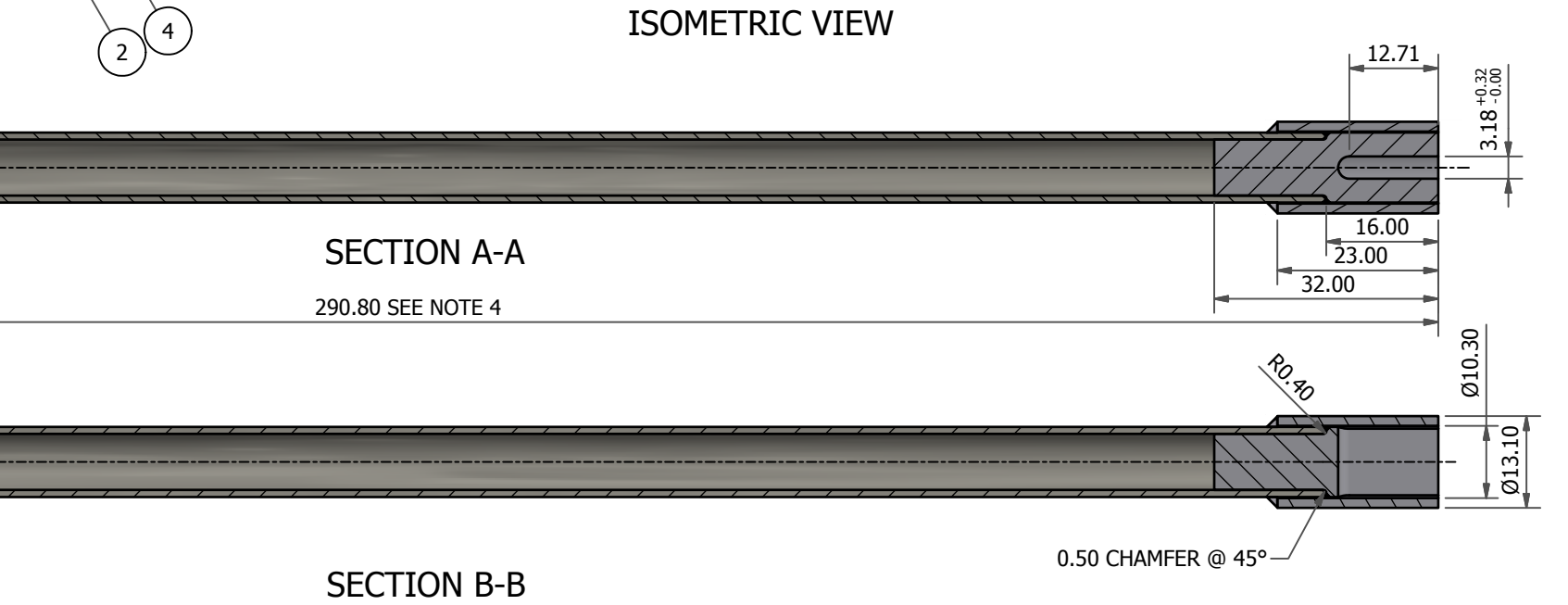
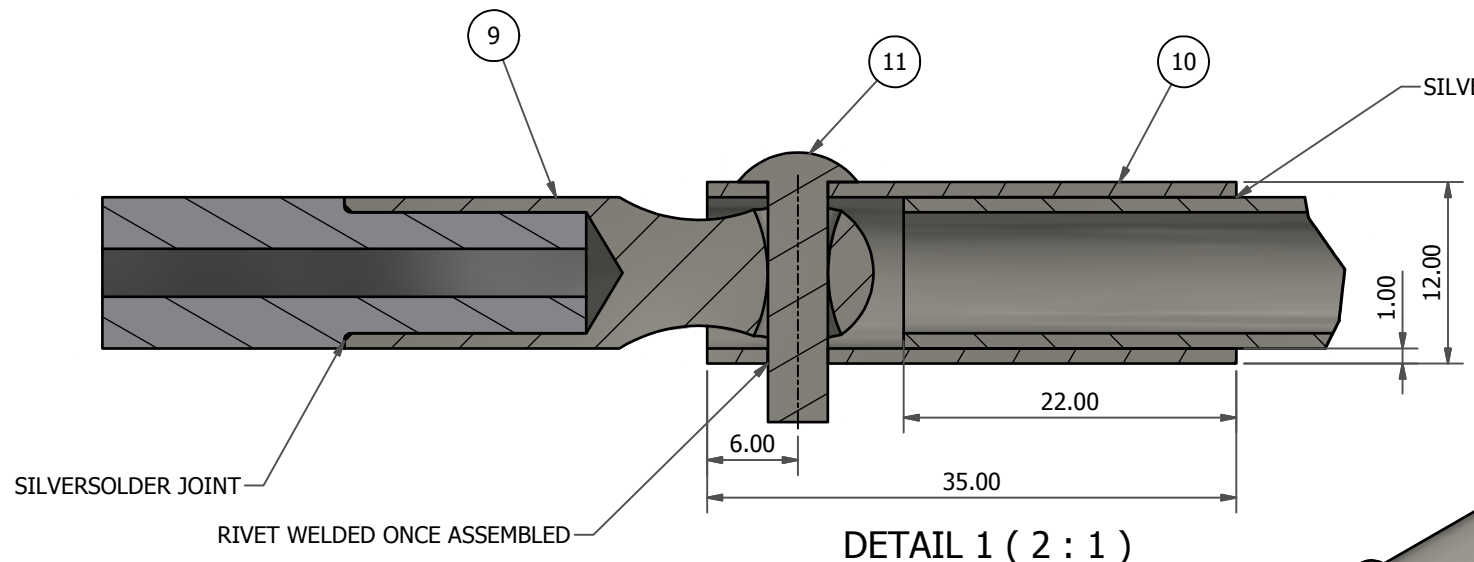
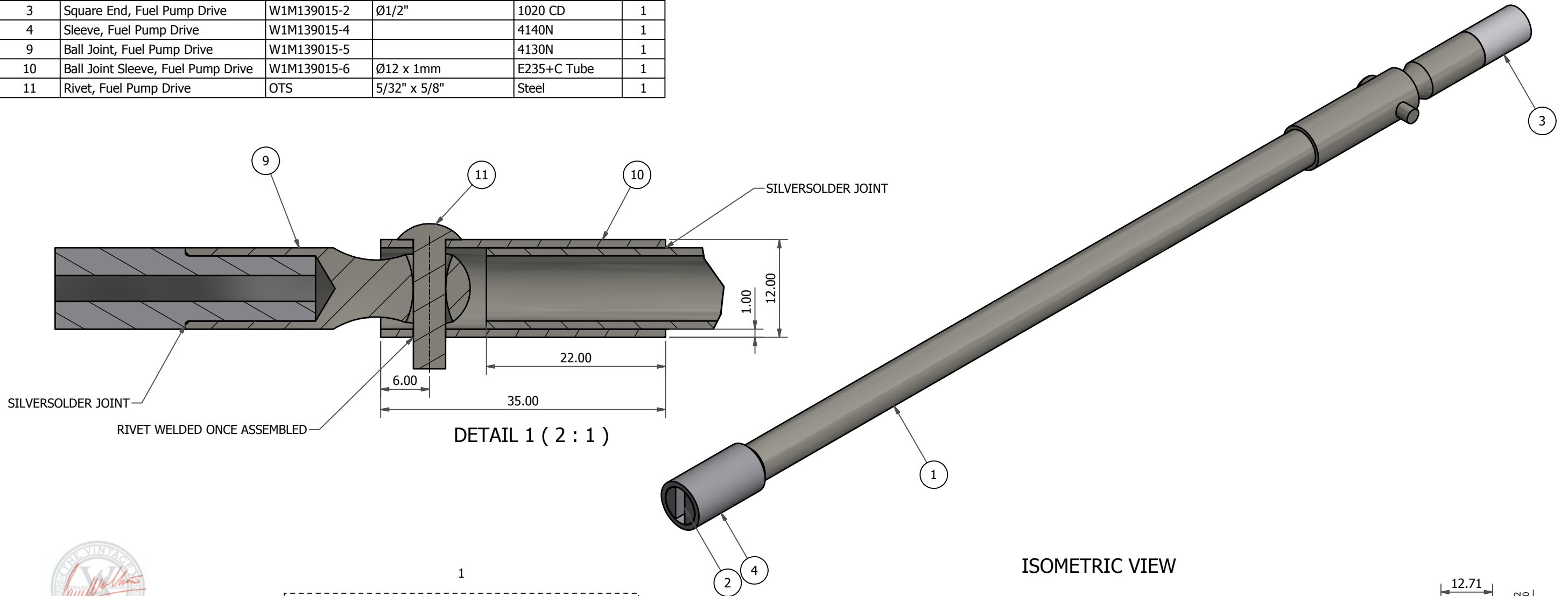
PARTS SUPPLIER: Local manufacture, or The Vintage Aviator Limited.

SUMMARY:

NOTES:

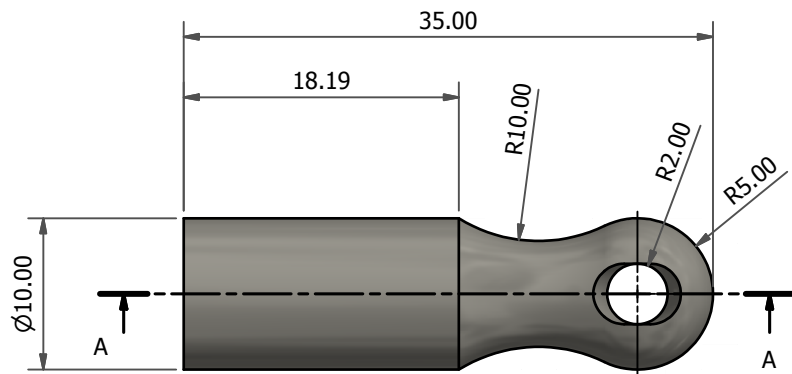
Parts List

ITEM	TITLE	PART NUMBER	DESCRIPTION	MATERIAL	QTY
1	Tube, Fuel Pump Drive	W1M139015-1	Ø10mm x 1.0mm	E235N Tube	1
2	Slotted End, Fuel Pump Drive	W1M139015-3	Ø1/2"	1020 CD	1
3	Square End, Fuel Pump Drive	W1M139015-2	Ø1/2"	1020 CD	1
4	Sleeve, Fuel Pump Drive	W1M139015-4		4140N	1
9	Ball Joint, Fuel Pump Drive	W1M139015-5		4130N	1
10	Ball Joint Sleeve, Fuel Pump Drive	W1M139015-6	Ø12 x 1mm	E235+C Tube	1
11	Rivet, Fuel Pump Drive	OTS	5/32" x 5/8"	Steel	1

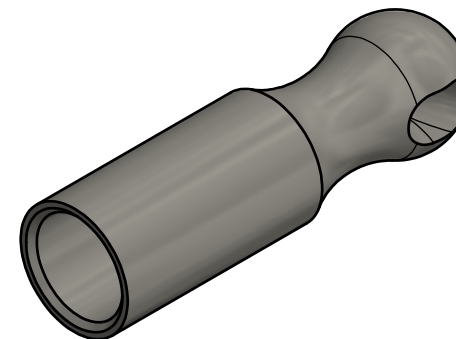


NOTE 1: REAM ID OF FLEX DRIVE CONNECTION, MAIN TANK TO PROVIDE FREE RUNNING FIT WITH THIS PART ON ASSEMBLY.
NOTE 2: ENDS TO HAVE TAP FIT INTO MAIN TUBE. WELD AROUND JOIN AND TURN TO FORM SMOOTH SURFACE.
NOTE 3: NO INDIVIDUAL DRAWINGS PROVIDED FOR DASHED PARTS.
NOTE 4: CHECK LENGTH ON ASSEMBLY, CAN VARY SLIGHTLY.

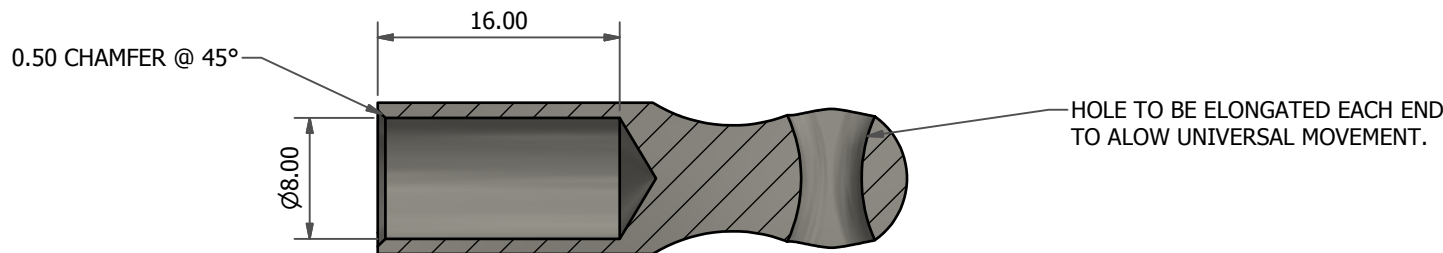
	Fuel Pump Drive		Break All Edges	Drawn By - Matthew	Date Created - 29/06/2011
			- Unless Specified -	Checked By -	Rev Date - 28/03/2018 Rev - 1.0
	Airframe - Sopwith Snipe	QTY Per Project - 1	NOT TO SCALE		
	Component - Fuel	Digitised From -	DRAWING IS A TECH DIRECTIVE. WRITTEN DIMENSIONS TO BE USED. DO NOT SCALE DWGS. ALL DISCREPANCIES REFERRED TO DESIGN OFFICE FOR CLARIFICATION OR CORRECTION. NO PART OF THIS WORK MAY BE COPIED, MODIFIED, REPRODUCED OR DISTRIBUTED IN ANY FORM WITHOUT PRIOR WRITTEN CONSENT OF THE VINTAGE AVIATOR LIMITED.		
Part Number - W1M139015	Original Dwg No - NA	Part ID Type -	Sheet Size - A3	Sheet 1 of 1	



SIDE VIEW



ISO VIEW



SECTION A-A



29 March 2018



Ball Joint, Fuel Pump Drive

Airframe - Sopwith Snipe		QTY Per Project - 1	Orig MTRL - na	Break All Edges	Drawn By - Paul	Date Created - 28/03/2018	
Component - Fuel		Digitised From - New	Variation MTRL - 4130N	Tolerance General ± 0.1	Checked By -	Rev Date -	Rev -
Part Number - W1M139015-5		Original Dwg - na	Surface Finish - As Manufactured	Angular $\pm 1^\circ$	DRAWING IS A TECH DIRECTIVE. WRITTEN DIMENSIONS TO BE USED. DO NOT SCALE DWGS. ALL DISCREPANCIES REFERRED TO DESIGN OFFICE FOR CLARIFICATION OR CORRECTION. NO PART OF THIS WORK MAY BE COPIED, MODIFIED, REPRODUCED OR DISTRIBUTED IN ANY FORM WITHOUT PRIOR WRITTEN CONSENT OF THE VINTAGE AVIATOR LIMITED.		
			Protective Coating - None	Unless Specified			
			Heat Treatment - None	SCALE 2:1	Part ID Type - 3	Sheet Size - A4	Sheet 1 of 1
				All Measurements in mm	Rounding 0.01		